



## Who Should Attend the Evaluation and Consultation Appointments?

### **1. The Evaluation:**

A very thorough evaluation will be done of the patient's vision. The testing procedure takes approximately 90 minutes. If the patient is under 18, at least one parent needs to be present during the evaluation. The parent will be in the exam room, so it is very important that you **do not bring any other children to the evaluation** (we do not want the patient distracted, nor do we have child care facilities). **Please *fully* complete and return all history forms at least 24 hours prior to the evaluation.**

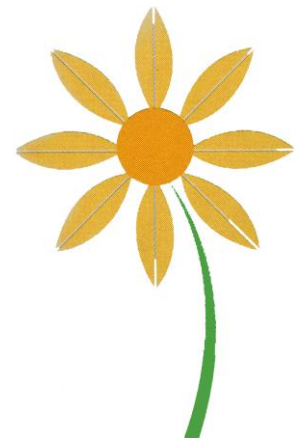
The cost of the evaluation is \$195, payable at the time of the evaluation. Accepted forms of payment are Visa, MasterCard, check, and cash (exact).

### **2. The Consultation:**

Following the evaluation, a consultation will be scheduled for a future date. The doctor will need to get input from all parents/guardians in order to ensure that all necessary information is taken into account in designing your child's treatment plan. During the consultation, the results of the evaluation will be discussed, along with any recommendations for treatment. We have found that it is very important for the patient that all parents/ guardians understand what is going on with their child's vision and how it is affecting his or her life. As such, it is **required** that **both parents are present**. If you are in a situation where there are one or more step-parents, we recommend that **all** parents be present. If it is uncomfortable for you for everyone to be present at the same time, please let us know, and separate consultations will be arranged.

The doctor will be reviewing a great deal of information about your child with you and may ask questions of a sensitive nature. Our experience has been that children are self-conscious about these discussions and therefore **we ask that your child not attend the consultation.**

The consultation takes approximately an hour. There will be a number of demonstrations that have been designed to help you understand what the patient is experiencing.





## **Financial Policy**

The Center for Vision Development is a fee-for-service facility and does not participate in third-party insurance, Medicare, or TennCare. Insurance companies limit treatment, care options, and the time physicians can spend with their patients. We have found that we cannot be participating providers in insurance networks and provide the time-intensive, well-researched, expert care that we do. Payment is expected in full at the time of service.

As a courtesy to our patients, we will provide an itemized statement after payment is made, which can be submitted to your medical insurance for potential out-of-network reimbursement to you.

If you have any questions about this policy, please contact our office.

128 Holiday Court  
Suite 126  
Franklin, TN 37067

P: (615) 791-5766 / F: (615) 791-5767  
[www.center4vision.com](http://www.center4vision.com)  
[center4vision@center4vision.com](mailto:center4vision@center4vision.com)

